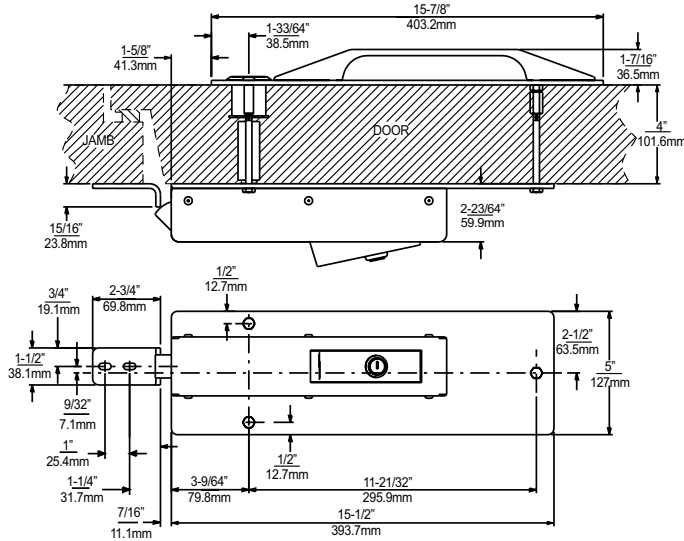


LOCKING LATCH



SPECIFICATIONS

MATERIAL:

Anodized aluminum mounting plates and latch body cover, die-cast Zamak latch tongue, die-cast Zamak outside pull handle with polished chrome finish, stainless steel inside push handle and strike, non-conductive plastic couplings.

MOUNTING:

Mounts with 3 bolts on 4" thick door, 30" wide or greater. Latch and handle through-bolt with hidden hardware.

OPTION:

BEST interchangeable core lock cylinders available.