

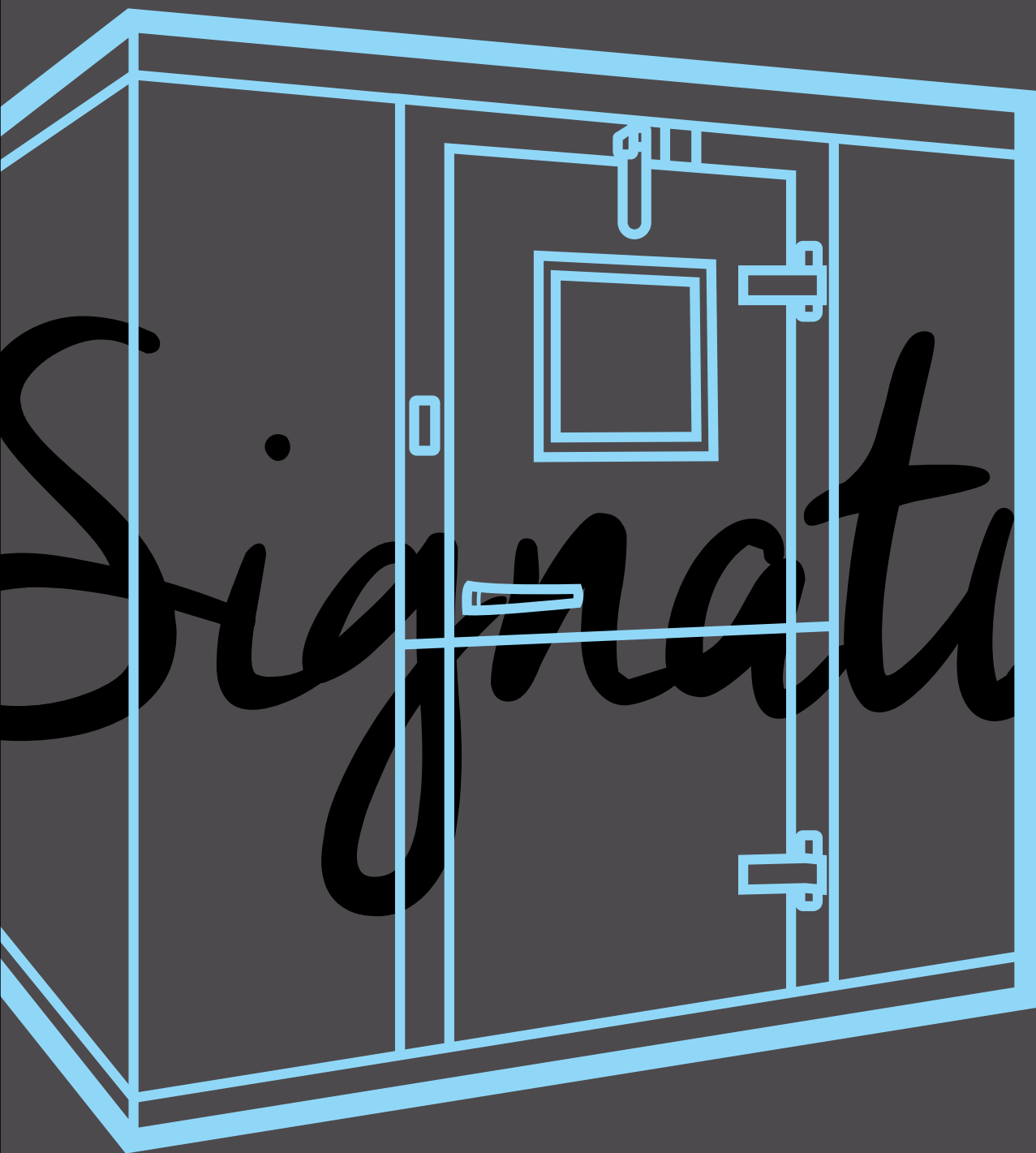
PRODUCT SPECIFICATION

A focused approach to consultants' needs



Signature
S E R I E S

Arctic®
WALK-IN COOLERS AND FREEZERS



Signature Series

Signature Series walk-ins are engineered and designed to meet the consultant's specification needs.

Arctic Industries offers a wide variety of features and finishes to adapt to each application requirement.

Signature Series provides solutions to match the specifications of the foodservice and healthcare industries, schools, institutions, stadiums and more.

Why Signature Series?

Our mission is to be a resource to the foodservice consultant by providing technical knowledge, experience, and an unmatched quality of service in the field of custom walk-in modular rooms and refrigerated solutions.

Arctic's history of commitment to its customers guarantees our consultants with a partner that respects their role and their goals throughout the process.



David Ben Grife
President



Product Insulation & Panels



-
- » Constructed of prefabricated modular urethane foamed-in-place UL Class 1 panels, designed for easy and accurate field assembly
 - » 4" Thick Insulation, UL 25 Flame Spread CFC free panels
 - » Modular design with tongue and groove construction and NSF wrap around panel gaskets
 - » Cam Action locking devices
 - » Construction compliant with NSF standard 7 & UL approved
 - » Signature Series panels "R" value meets EISA requirements

Signature Series Construction

- » Standard 4-inch thick panels
- » Panel Finishes:
 - .040 mill and white embossed and smooth aluminum
 - 18-22 GA Stainless Steel
 - Metal colors and patterns
- » 16GA Stainless Steel Floors
- » Pre-Wired door sections with heater wire and light fixtures
- » Aluminum diamond treadplate interior & exterior of door plugs and jambs
- » LED light fixtures
- » A variety of door hinges with spring assist mechanism
- » Deadbolt locking door handle
- » Standard 36" x 78" door
- » Polished and brushed hardware (*hinges, door closer & latch*)
- » Inside safety release mechanism & safety night light
- » Multi-monitor Alarm control systems
- » NSF construction

Arctic
COLD STORAGE AND FREEZERS

CAUTION
DO NOT OPEN
DOOR
WHILE
UNIT IS
OPERATING
OR
DEFROSTING
PROCESS
IS IN
PROGRESS
OR
WHILE
UNIT IS
UNDER
REPAIR
OR
MAINTENANCE
WORK
IS BEING
PERFORMED
ON
UNIT

Refrigeration Units

There are many factors to be considered when choosing a refrigeration unit for your walk-in cooler such as ambient temperature, entering temperature of the product, desired holding temperature, and frequency of door opening.

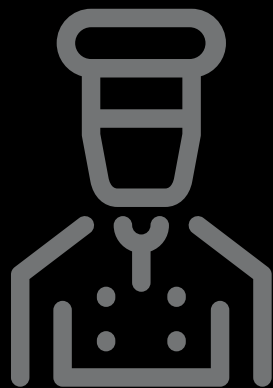
Signatures Series refrigeration systems match your needs for reliable and consistent operations. Some of the systems offered are:

- » Remote Systems
(remote pre-assembled and remote quick disconnect)
- » Self-Contained Units
- » Low profile, slim profile and center mounted evaporators.
- » Air Cooled and Water cooled condensing units

Arctic offers a **5-year compressor** and **1-year labor warranty** for all refrigeration units.



Signature Series can
engineering services for
such as meat processing
applications, floral, food
bulk warehousing, and
holding in all food s



provide refrigeration
for special applications
dining rooms, industrial
fruit and vegetable,
and specialized product
service applications

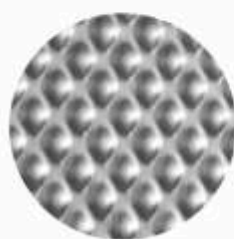


Metal Finishes

Signature Series offers a wide variety of metal finishes & textures to enhance the walk-in cooler design

More than 100 finishes are available including metal patterns, colors, and vinyl



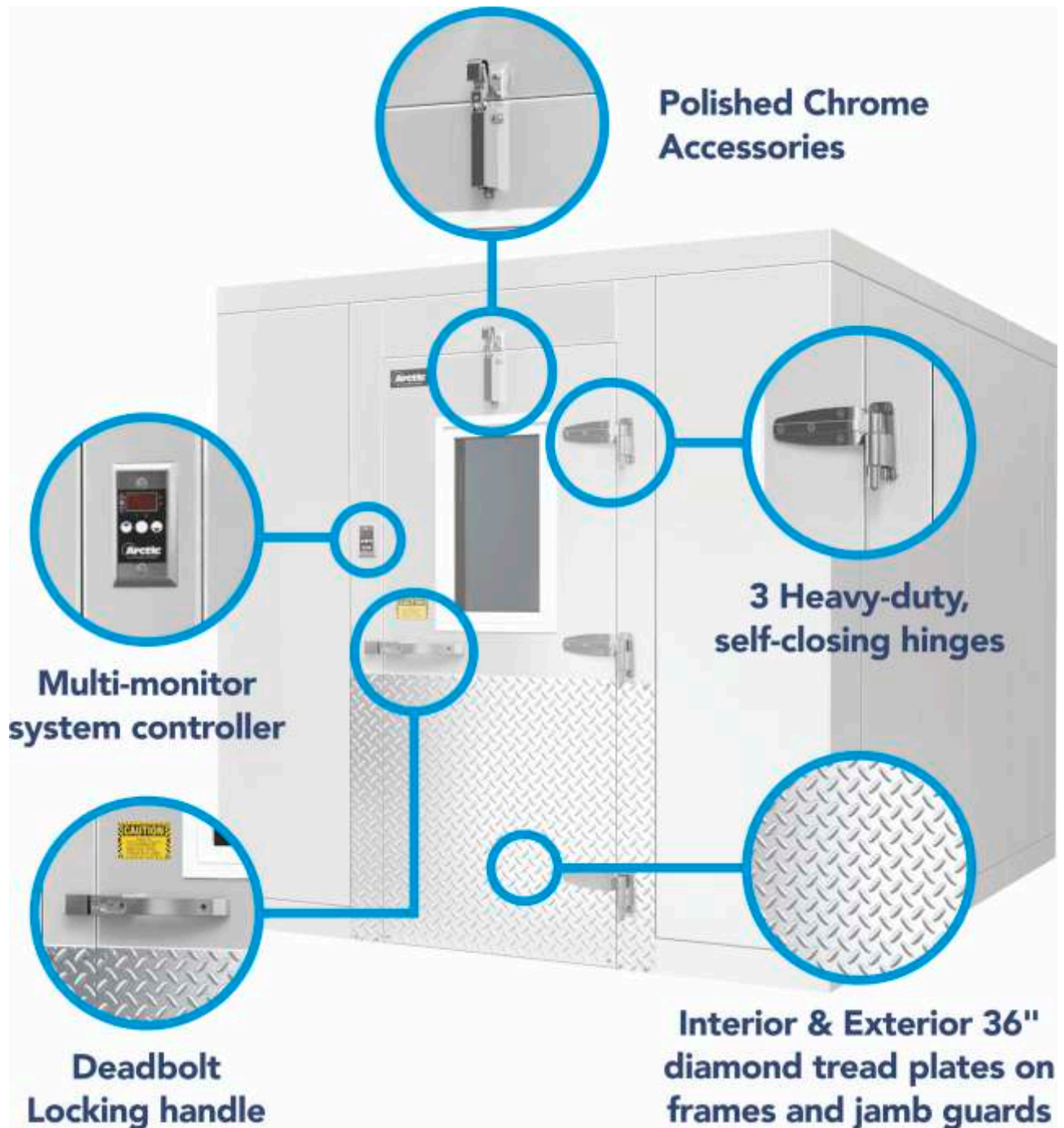


Standard Signature Series Door

The door is the most important component of the walk-in cooler as it receives the most use.

The Signature Series door is engineered and built to last:

- » All Signature Series doors are "foamed-in-place", in -fitting, self-closing, flush-mounted with magnetic gasket and modular design
- » The standard door size is 36" x 78". Other dimensions are available
- » The door features 3 heavy-duty, self-closing, cam action, gravity hinges that are mounted onto 1/4" steel plates with machine bolts, ensuring maximum strength and eliminating sagging.
- » All doors include interior & exterior 36" high aluminum diamond-tread kick-plates on doors plugs and jambs
- » Deadbolt handle with a key cylinder and hydraulic door closer
- » Multi-monitor system controller with digital thermometer, audio/visual alarm and lighting switch
- » Variety of windows available
- » Inside Safety release to allow exit from inside
- » Polished and brushed chrome accessories



Special Application Doors



- » **Glass doors:** We offer heavy duty glass doors, automatic doors, and traditional options. All doors are compliant with EISA regulations.
- » **Sliding Doors:** Arctic can provide sliding doors especially used where space restricts the use of swing doors or when installation space is only available on one side of the door opening.
- » **Other special application doors:**
 - » Specialty Reach-in doors
 - » Bi-parting sliding doors
 - » Custom Size doors
 - » High and full lift doors
 - » Automatic or manual doors

Doors & Compartment Accessories

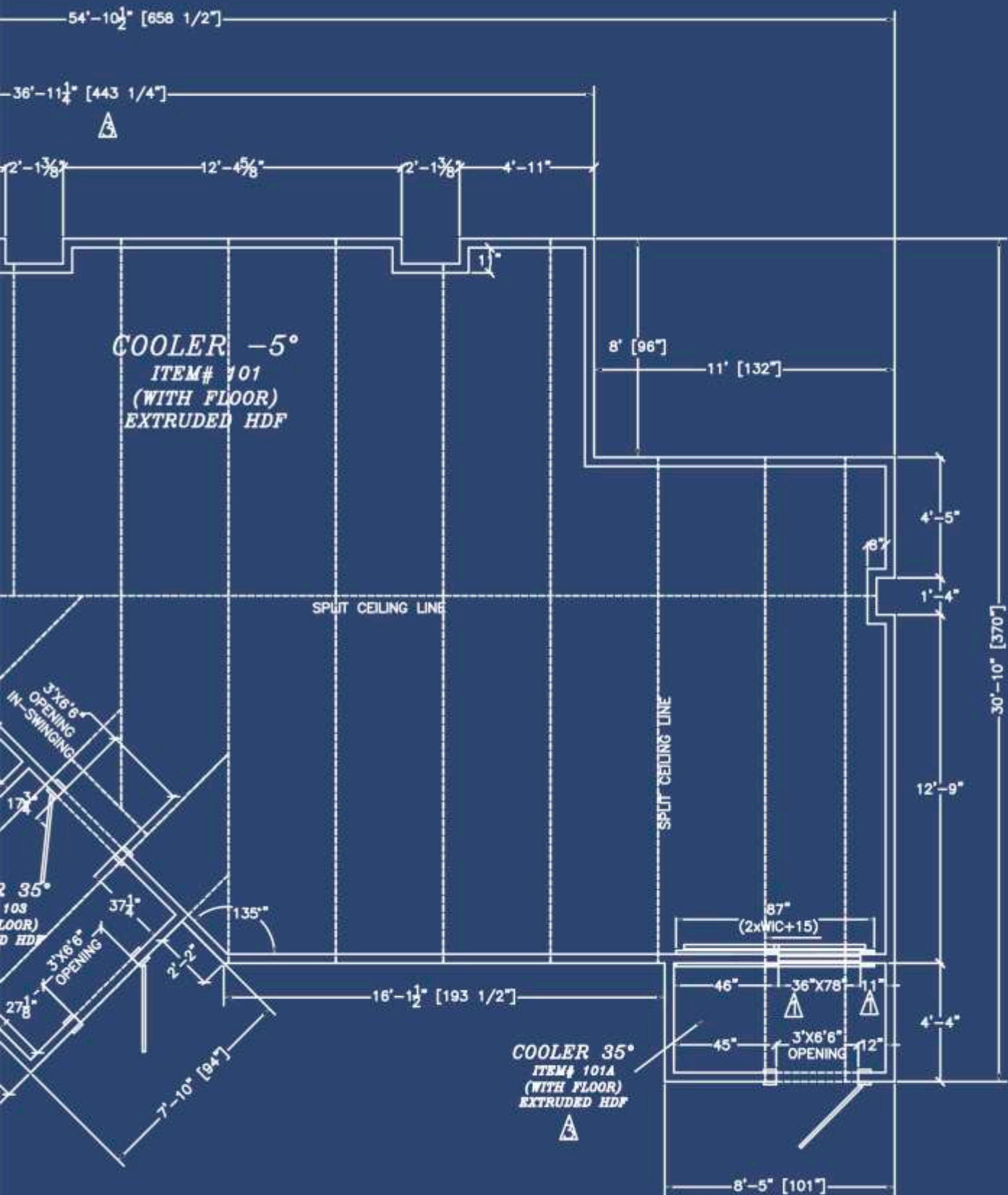
Signature series offers a large selection of accessories to match your spec needs:

- » Locking bars
- » Panic buttons
- » Vision Panels
- » Remote control doors
- » Thermometers & Alarm systems
- » Additional Hinges
- » 48" Jamb Guards
- » Air curtains
- » Closure panels & trim strips
- » LED lights



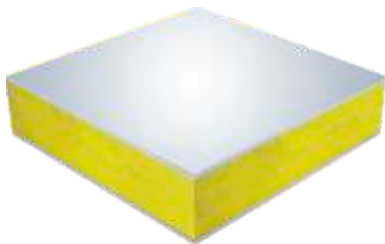


If it's in your
specs, we can
build it

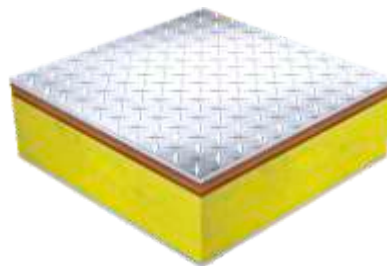


Floors

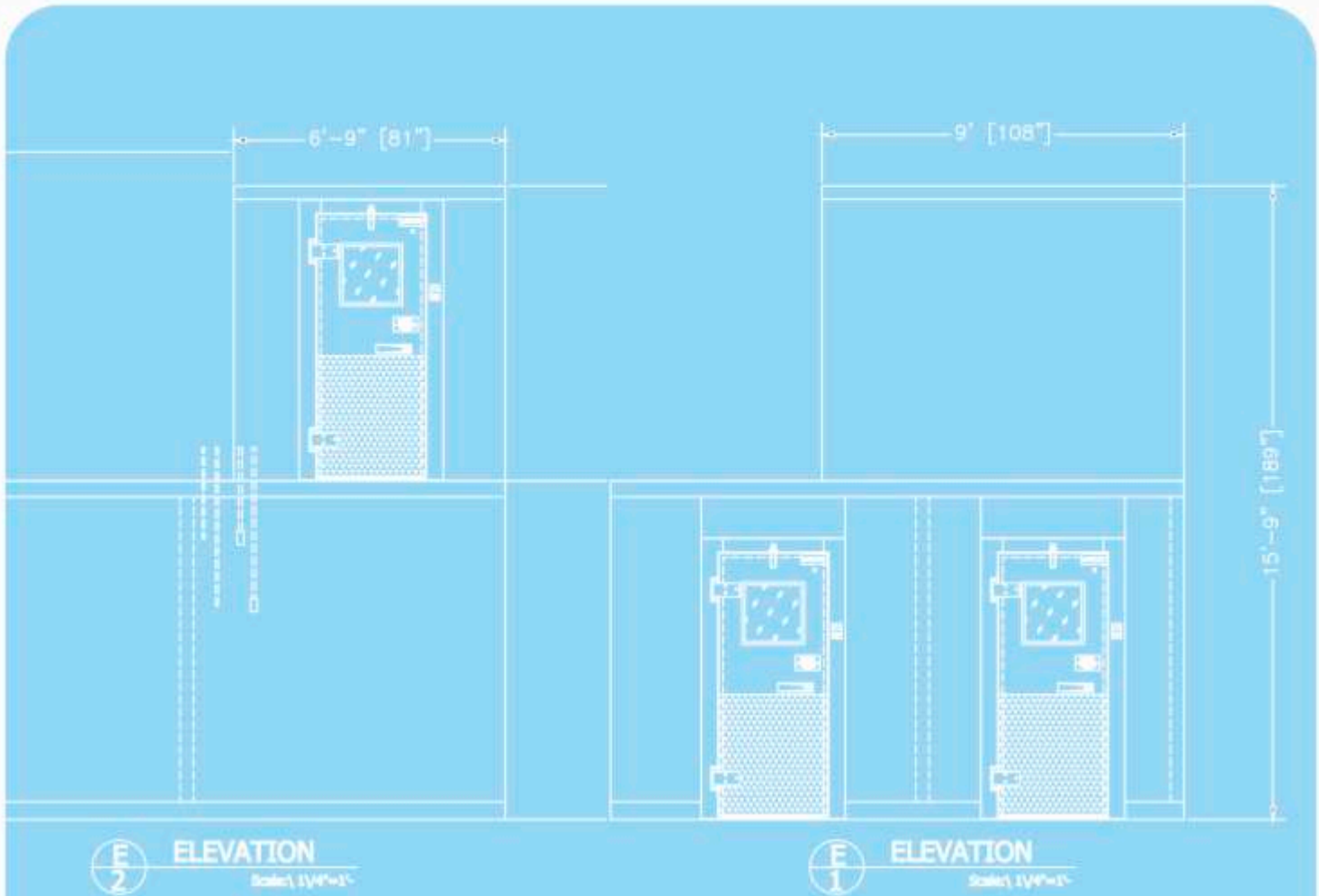
All Signature Series standard floors are **16 GA** stainless steel for increased durability and strength. Arctic offers a wide variety of floors to meet your needs



Signature Series Standard Floor with **16 GA Stainless**



Signature Series reinforced Floor with $\frac{3}{4}$ " marine plywood subfloor and .125 diamond tread plate



Engineering
beyond
imagination



Warranties

All Signature Series walk-ins include*:

15 Year Panels
5 Year Compressor
1 Year Labor
1 Year Parts



Arctic also offers 5 Years Labor & Parts at an additional price.

About Arctic

Arctic has more than 35 years of experience providing cold storage solutions for all kinds of industries in North America, Central & South America and the Caribbean Islands.

Every project represents a new challenge and our team works ambitiously to deliver a high-quality product that impacts visually and is built to last.

Please see the complete Warranty text for full warranty details.

* Learn more about Signature Series walk-ins at:

www.arcticwalkins.com or call us at **1-800-325-0123**

Signature
S E R I E S

Arctic[®]
WALK-IN COOLERS AND FREEZERS

Manufactured By:
Arctic Industries, Inc.

9731 N.W. 114th Way, Miami, FL 33178
(305) 883-5581 - Fax: (305) 883-4651
Toll Free: (800) 325-0123

ARCTIC © 2016 ALL RIGHTS RESERVED
TERMS OF USE AND PRIVACY POLICY



Represented by:



Energy
Independence
& Security Act



APPROVED



APPROVED